

A close-up photograph of the side of a red fire truck. The truck has yellow lettering that reads "WEST STANISLAUS COUNTY FIRE PROTECTION DISTRICT". Below this, a white reflective stripe contains the word "FIRE" in red. The truck is parked in a garage, and other fire trucks are visible in the background.

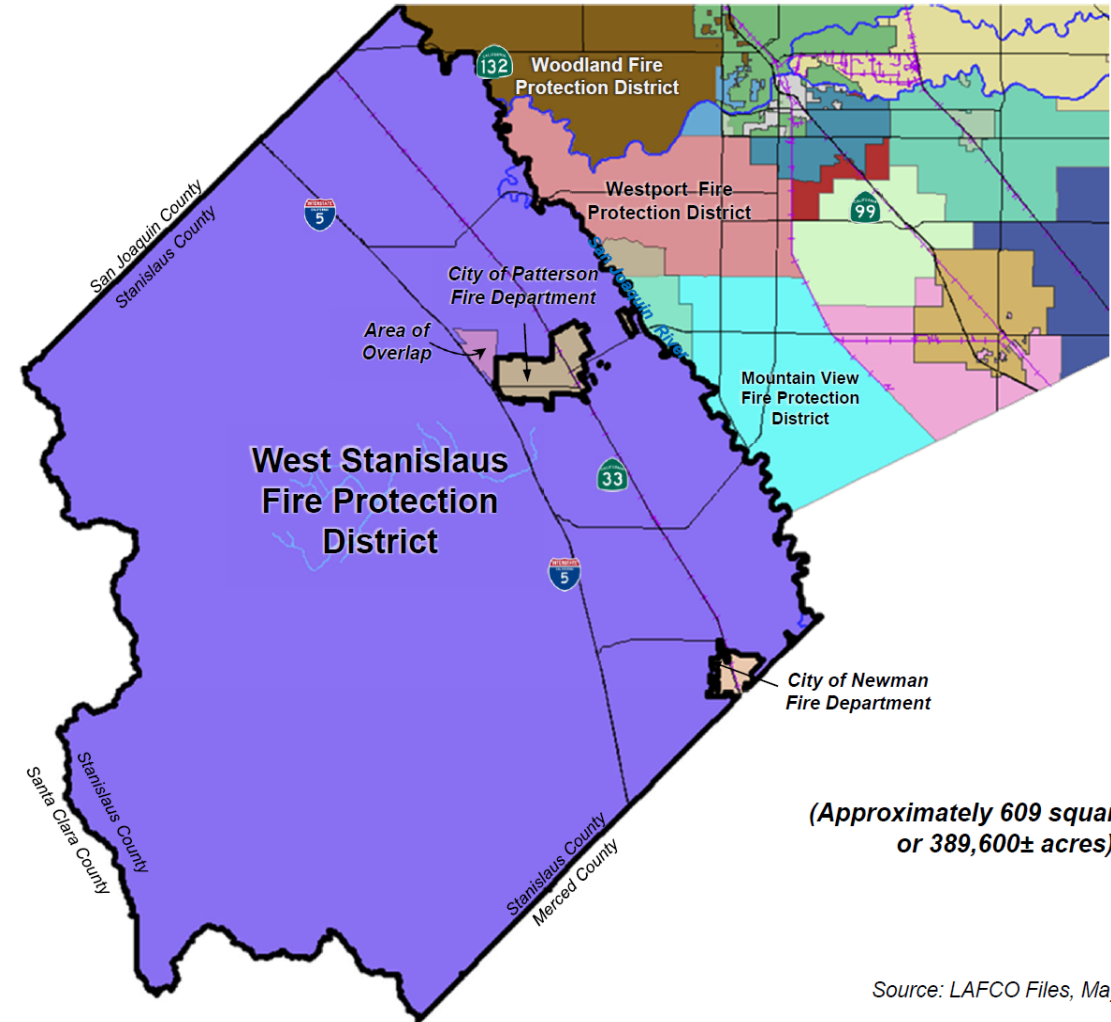
**WEST STANISLAUS  
COUNTY FIRE  
PROTECTION DISTRICT**

**FIRE**

**Measure M  
Information  
Night**

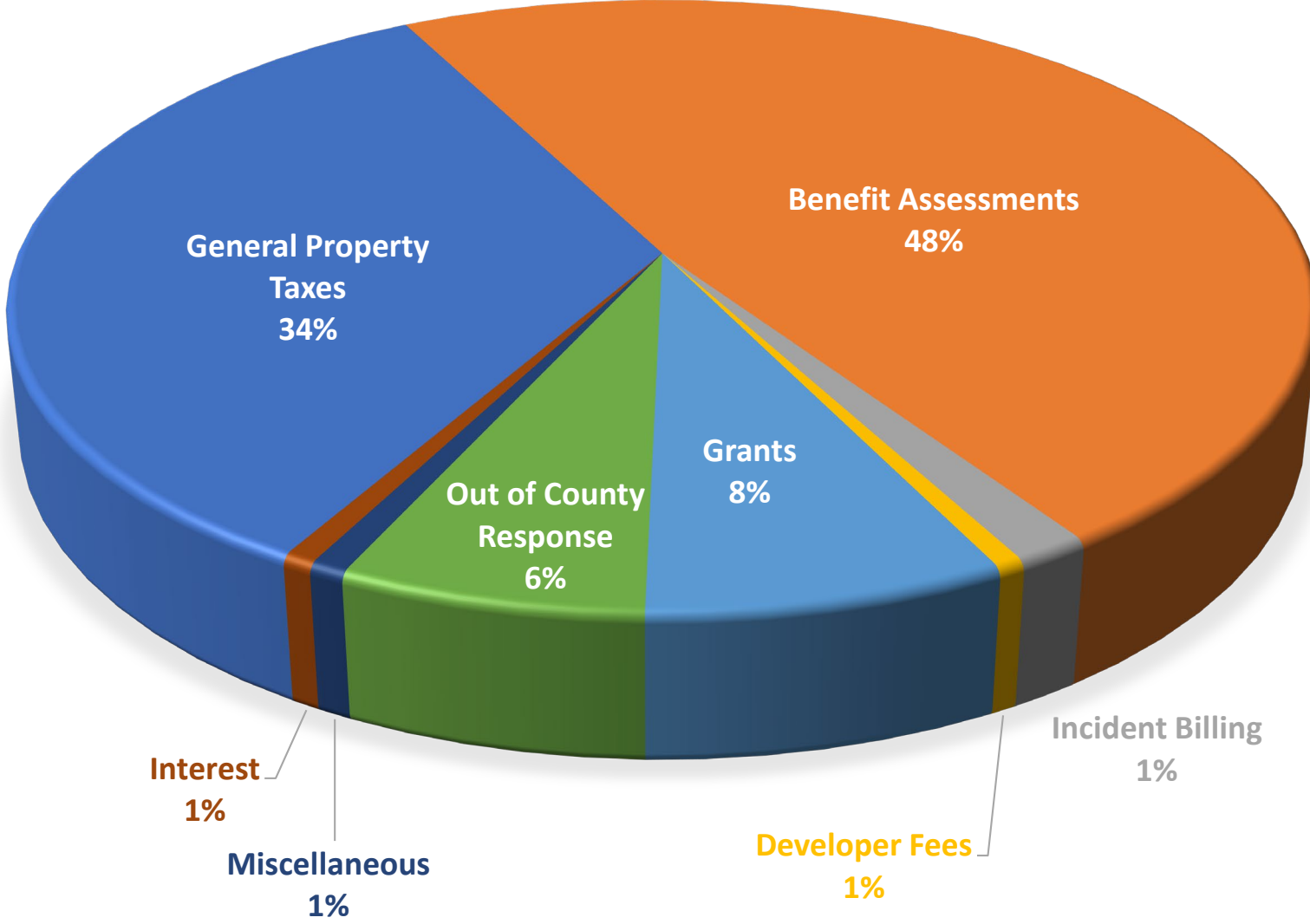
# WEST STANISLAUS FIRE PROTECTION DISTRICT BOUNDARY AND SPHERE OF INFLUENCE

- **80 volunteer** firefighters provide fire protection and emergency medical services to our community
- District boundaries encompass:
  - Unincorporated area around the cities of Patterson and Newman
  - Communities of Crows Landing, Diablo Grande, El Solyo, and Westley

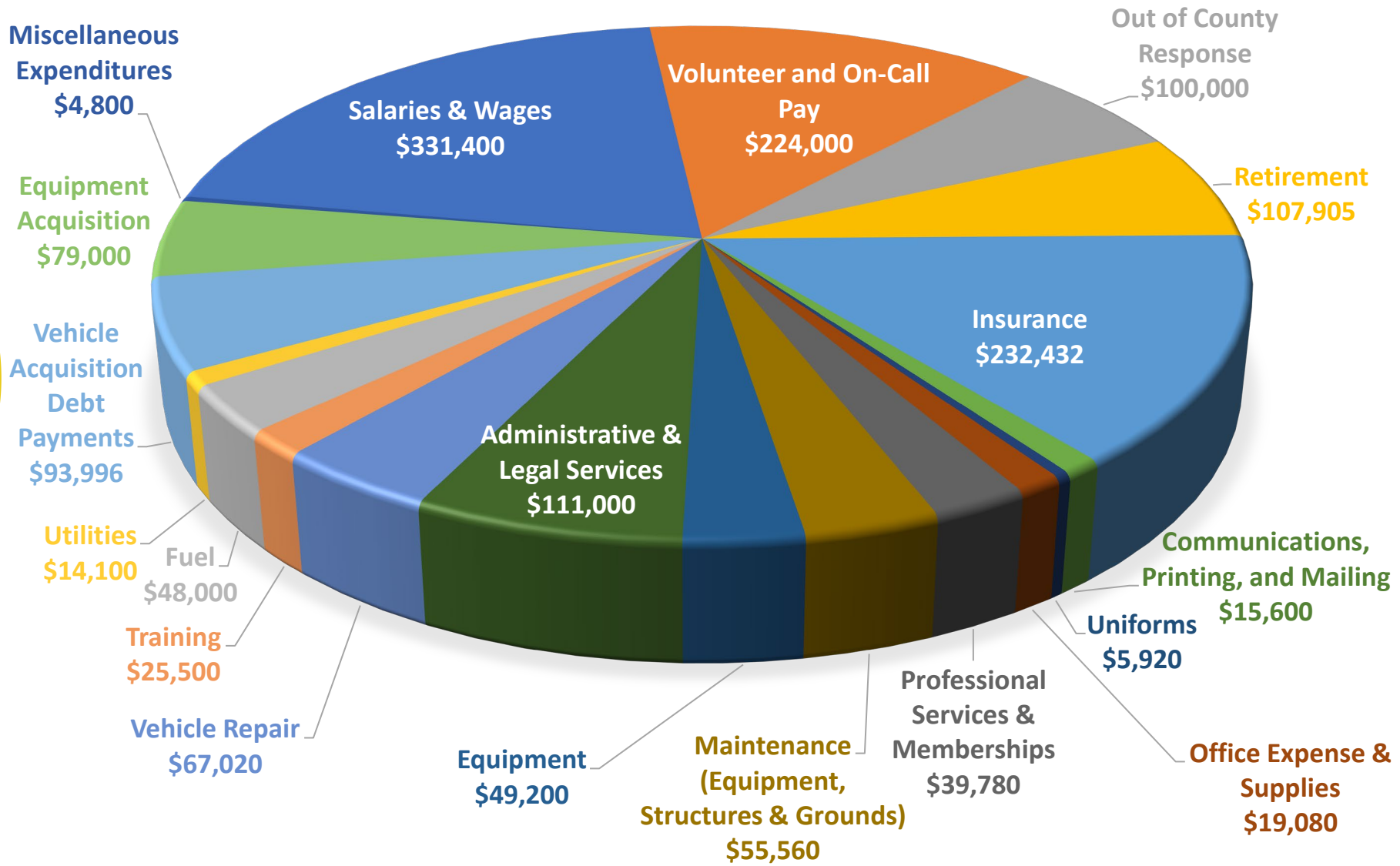


# THE DISTRICT RECEIVES APPROXIMATELY \$1.5 MILLION TO FUND ANNUAL OPERATIONS

District's Annual Revenues



**ANNUAL DISTRICT EXPENDITURES ARE ESTIMATED AT \$1.6 MILLION,  
APPROXIMATELY \$100,000 MORE THAN ONGOING REVENUES**



# The Fire District is Facing Financial Challenges

---

- With rapidly increasing costs, the District's revenues are simply not keeping pace with expenditures.
  - The District has made every effort to make cuts to live within our means, but cost increases continue to outpace revenues.
  - As a result, the District is depleting reserves.



# Supporting Our Volunteers with Compensation and Training Improves Response for Our Community



- The District is dependent on volunteer firefighters to respond to emergency calls.
  - Providing enhanced volunteer compensation will enable the district to recruit and retain essential volunteers that selflessly serve the community.
- Well-trained volunteers are essential to protecting lives and property.
  - Funding for training will better prepare our firefighters to respond to emergencies in the community.



# Life Saving Apparatus and Equipment is Outdated and Needs Replacement

- The Fire District has always tried to be fiscally responsible with apparatus (trucks) and equipment.
  - But, now the fire apparatus, tools, and gear are outdated and need replacement.
- The cost of these capital needs far exceeds the available funding of the District.
- Community support is needed to ensure adequate apparatus and equipment is available to respond to fire, medical, and rescue emergencies.

# Measure M Would Raise Approx. \$540,000 Per Year

- Operational and capital reserves to preserve the long-term fiscal stability of the District
- Acquisition, maintenance, or replacement of aging apparatus, vehicles, and equipment
- Maintenance and improvements to fire stations
- Compensation for volunteer firefighters
- Firefighter training







---

# Taxpayer Protections

- Measure M may only be used for the specific purposes described in the ballot measure.
  - In this case would be fire protection and emergency medical services provided by the West Stanislaus County Fire Protection District.
- An annual audit report will monitor the receipt and expenditure of Measure M.
  - To ensure that the Fire District is receiving the full amount collected and that it is spent on appropriate expenditures.
- The District will prepare an annual report which shall include the amount of special tax revenues collected and expended each year.

# Measure M Vote By Mail Election – Ballots Due by August 29, 2023

To preserve public safety and ensure essential fire protection and emergency medical response in our community by providing funding for: reserve funds; apparatus, vehicle, and fire stations; volunteer firefighter compensation; and firefighter training shall the West Stanislaus County Fire Protection District Ordinance No. 2023-01 be adopted, authorizing a special tax levy, including \$125 annually per residential unit, raising approximately \$540,000 annually until repealed, with annual audits, and all money staying local?